

2102735-1 ✓ ACTIVE

MULTIGIG RT | MULTIGIG RT 2-R

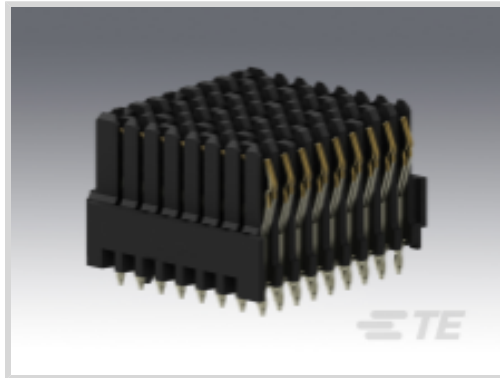
TE Internal #: 2102735-1

High Speed Backplane Connectors, Board-to-Board, 72 Position,
Mating Alignment, Guide Pin Mating Alignment Type, 9 Row, 8
Column, MULTIGIG RT 2-R

[View on TE.com >](#)



Connectors > PCB Connectors > Backplane Connectors > High Speed Connectors



Connector System: **Board-to-Board**

Number of Positions: **72**

Row-to-Row Spacing: **1.8 mm [.07 in]**

Mating Alignment: **With**

Mating Alignment Type: **Guide Pin**

Features

Product Type Features

| | |
|---------------------------------------|-----------------------|
| Applied to Printed Circuit Board Type | Backplane |
| Connector System | Board-to-Board |
| PCB Connector Assembly Type | PCB Mount Receptacle |
| Shroud Style | Unshrouded |
| Connector & Contact Terminates To | Printed Circuit Board |

Configuration Features

| | |
|------------------------|-----------------------|
| Number of Positions | 72 |
| Number of Rows | 9 |
| Number of Columns | 8 |
| Backplane Architecture | Traditional Backplane |
| PCB Mount Orientation | Vertical |
| Guide Location | Left |

Contact Features

| | |
|------------------------------|-------|
| Contact Current Rating (Max) | 1.5 A |
|------------------------------|-------|

Mechanical Attachment

| | |
|-----------------------|-----------|
| Mating Alignment | With |
| Mating Alignment Type | Guide Pin |



| | |
|-------------------------|-------------|
| Connector Mounting Type | Board Mount |
|-------------------------|-------------|

Housing Features

| | |
|--------------------------|----------------|
| Number of Shrouded Sides | 0 |
| Centerline (Pitch) | 1.8 mm[.07 in] |

Dimensions

| | |
|--------------------|----------------|
| Row-to-Row Spacing | 1.8 mm[.07 in] |
|--------------------|----------------|

Usage Conditions

| | |
|-----------------------------|----------------------------|
| Operating Temperature Range | -55 – 125 °C[-67 – 257 °F] |
|-----------------------------|----------------------------|

Operation/Application

| | |
|---------------------|----------------|
| Circuit Application | Power & Signal |
|---------------------|----------------|

Product Compliance

For compliance documentation, visit the product page on [TE.com](#)>

| | |
|---|--|
| EU RoHS Directive 2011/65/EU | Not Compliant |
| EU ELV Directive 2000/53/EC | Not Compliant |
| China RoHS 2 Directive MIIT Order No 32, 2016 | Restricted Materials Above Threshold |
| EU REACH Regulation (EC) No. 1907/2006 | Current ECHA Candidate List: JUNE 2022 (224) Candidate List Declared Against: JAN 2022 (223) SVHC > Threshold: Pb (13% in Component Part) Article Safe Usage Statements: Do not eat, drink or smoke when using this product. Wash thoroughly after handling. Recycle if possible and dispose of the article by following all applicable governmental regulations relevant to your geographic location. |
| Halogen Content | Low Halogen - Br, Cl, F, I < 900 ppm per homogenous material. Also BFR/CFR/PVC Free |
| Solder Process Capability | Not applicable for solder process capability |

Product Compliance Disclaimer

This information is provided based on reasonable inquiry of our suppliers and represents our current actual knowledge based on the information they provided. This information is subject to change. The part numbers that TE has identified as EU RoHS compliant have a maximum concentration of 0.1% by weight in homogenous materials for lead, hexavalent chromium, mercury, PBB, PBDE, DBP, BBP, DEHP, DIBP, and 0.01% for cadmium, or qualify for an exemption to these limits as defined in the Annexes of Directive 2011/65/EU (RoHS2). Finished electrical and electronic equipment products will be CE marked as required by Directive 2011/65/EU. Components may not be CE marked. Additionally, the part numbers that TE has identified as EU ELV compliant have a maximum concentration of 0.1% by weight in homogenous materials for lead, hexavalent chromium, and mercury, and 0.01% for cadmium, or qualify for an exemption to these limits as defined in the Annexes of Directive 2000/53/EC (ELV). Regarding the REACH Regulation, the information TE provides on SVHC in articles for this part number is based on the latest European Chemicals Agency (ECHA) 'Guidance on requirements for substances in articles' posted at this URL: <https://echa.europa.eu/guidance-documents/guidance-on-reach>

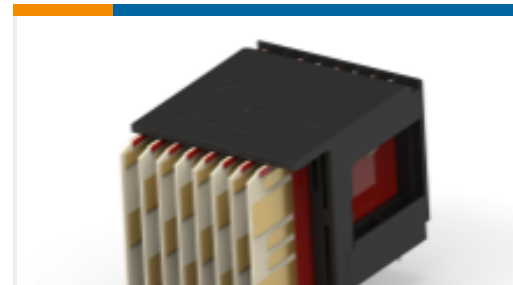
Compatible Parts



TE Part # 2000676-1
Keyed Guide Pin, Machined, Vita 46



TE Part # 2000713-1
RA Keyed Guide Mod, Vita 46,
Machined



TE Part # 2356159-1
R/A PLUG ASSY 7 ROW MULTIGIG
RT3, H-LEFT

Also in the Series | MULTIGIG RT 2-R



Backplane Guide Hardware(11)



High Speed Backplane Connectors(21)

Documents

Product Drawings

[BP, Half Left End, MULTIGIG RT 2R](#)

English

CAD Files

[3D PDF](#)

3D

Customer View Model

[ENG_CVM_CVM_2102735-1_D.2d_dxf.zip](#)

English

Customer View Model

[ENG_CVM_CVM_2102735-1_D.3d_igs.zip](#)

English

Customer View Model

[ENG_CVM_CVM_2102735-1_D.3d_stp.zip](#)

English

By downloading the CAD file I accept and agree to the [Terms and Conditions](#) of use.

Datasheets & Catalog Pages

[SOSA Aligned Interconnect Solutions](#)

English

[MULTIGIG RT 2-R Ruggedized Connectors](#)



English

MULTIGIG RT 3 and RT 2-S Connectors

English

Product Specifications

Electrical Performance Report

English

Product Environmental Compliance

Product Compliance

English

Product Compliance

English